



Visible and invisible laser emitters. Please avoid direct exposure.



FMA[®]

AN/PEQ-15A
DBAL-A2

FMA 2023 www.fma.hk / TB1459

PRODUCT DESCRIPTION

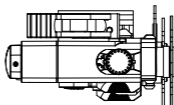
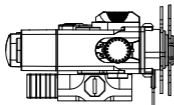


DBAL's series of laser sights have always been a product favored by domestic and foreign units and users. DBAL-A2 was directly installed by Country M and was awarded the code name "AN/PEQ-15A". As a relatively classic product, it has a low, simple shape and complete functions.

The FMA AN/PEQ-15A DBAL-A2 launched by FMA this time focuses on its appearance details and product performance to meet the needs of users. In terms of appearance, the engraving is complete and detailed. In terms of function, it provides LED white light, visible laser and IR invisible light fill-in modes. And the "emergency lighting" function on the prototype is perfectly reflected, and it also comes standard with a sight board, presenting the most complete DBAL-A2 to users.

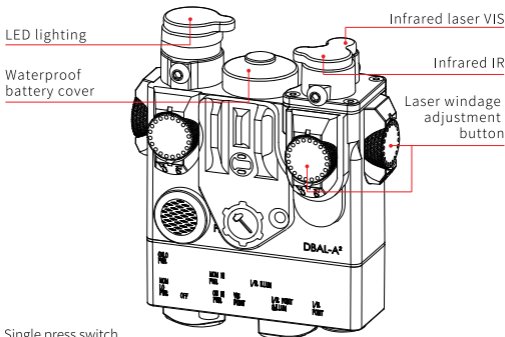
As a product that has been tested in actual use, this time FMA AN/PEQ-15A DBAL-A2 has been tested in rain and high and low temperatures. It can be said that this is a product that has both appearance and connotation.

PARAMETER INFORMATION



Material	nylon	
Product color	BK/DE	
Size	86.8*71*46mm	
Weight	161g (Batteries not included)	
Battery Type	(1 cell) 3V CR123A lithium battery	Compatible with 3.7V
Battery Life	> 7 hrs. (Test environment 26 °C)	Theoretical value
Waterproof level	IPX4	
Visible laser	The test environment room temperature is 26 degrees	
Output Power	High power: 5mw, Low power: 1.2mw	
Invisible laser	The test environment room temperature is 26 degrees	
Output Power	High power: 1.7mw, Low power: 0.5mw	
LED white light	The test environment room temperature is 26 degrees	
Output Power	Low brightness L: 36 lumens (lm), High brightness H: 70 lumens (lm)	
Indicator light	Green light is normal, Red light is low battery	

FEATURES AND CONTROLS



Single press switch
Double click to open -
emergency lighting

MOM HI PWR
Single press, single light,
high power

ON LO PWR
Do not press the switch
always on low power

Machine sight
board

MOM LO PER
Single press, single
light, low power

I/R POINIR
Invisible fill light

OFF

ON HI PWR
No pressing the
switch always on
and high power

IVR POIN&ILLUM
Visible laser +
LED white light

Indicator light green light is
normal, red light is low
battery

I/R ILLUM LED white light

VIS POINT visible laser

INSTALLATION NOTES

BATTERY INSTALLATION

Use CR123A battery*1
(Battery needs to be purchased by yourself)

When installing
the positive
pole faces outward



REMOTE CONTROL INSTALLATION

Remote control can be installed Remote operation use



DISASSEMBLY INSTRUCTIONS



PICATINNY CARD SLOT

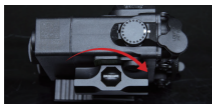
Easily attaches to any Picatinny rail via standard rail snap mounts.



1 Press button



2 Press and turn counterclockwise



3 Tighten the screws properly

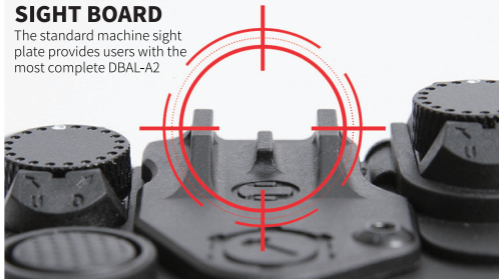


4 After installing the guide rail, turn it in the opposite direction

SIGHTS INSTALLATION

MACHINE SIGHT BOARD

The standard machine sight plate provides users with the most complete DBAL-A2



Place the sight plate and screws into the screw holes

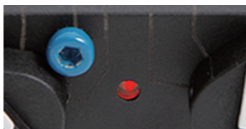


Tighten the screw clockwise

LED STATUS DESCRIPTION



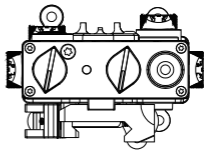
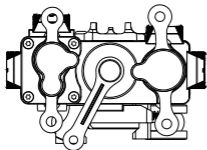
Battery $> 2.5V$ indicator light is green working voltage



When the battery is $\leq 2.5V$, the indicator light is red and the battery is low.

Indicator light	Indicate status	State
Green	Always on	Always on after turning on
Red	Always on	The function is not turned on or the battery is low

GEAR INTRODUCTION



SWITCH-GEAR DESCRIPTION:

GEAR	FUNCTION
OFF	Shut down
MOM LO PWR	Press the switch, single press and single light (low power)
ON LO PWR	Do not press the switch, always on (low power)
MOM HI PWR	Press the switch, single press and single light (high power)
ON HI PWR	Do not press the switch, always on (high power)

Note: In any mode, quickly double-click the switch to turn on the "emergency lighting mode", LED white light + visible laser (high power).

FUNCTION-GEAR DESCRIPTION:

GEAR	FUNCTION
VIS POINT	Visible laser
I/R ILLUM	LED white light
I/R POIN&ILLUM	Visible laser + LED white light
I/R POIN	IR invisible laser

SAFETY WARNING



Using incorrect batteries creates a risk of fire or explosion. As a note, make sure the battery does have similar physical characteristics to a CR123A battery, but has a different voltage and/or polarity path. Make sure that only 3V lithium batteries with raised positive (+) terminals or rechargeable batteries of the same type are installed in the DBAL-A2.

There is a risk of fire or explosion when using non-branded batteries. Make sure to install only 3V disposable batteries or 3V and 3.7V rechargeable batteries from reputable battery manufacturers in the DBAL-A2. These batteries are specifically designed for use in high-performance, high-drainage equipment and contain built-in faults, and thermal protection function.

If you use rechargeable batteries, make sure to use genuine 3V and 3.7V batteries produced by well-known battery manufacturers. Do not use off-brand or counterfeit batteries. Due to its unstable voltage, it may cause equipment damage or even risk of fire.

1. Do not stare into the laser beam.
2. Do not point the laser beam at the mirror-like surface.
3. Do not observe the laser beam through binoculars or telescopes.
4. Do not shine the laser beam into other people's eyes.



www.fma.hk